

Type : **VPC**

Part No.: **ENG5**□□□□□□

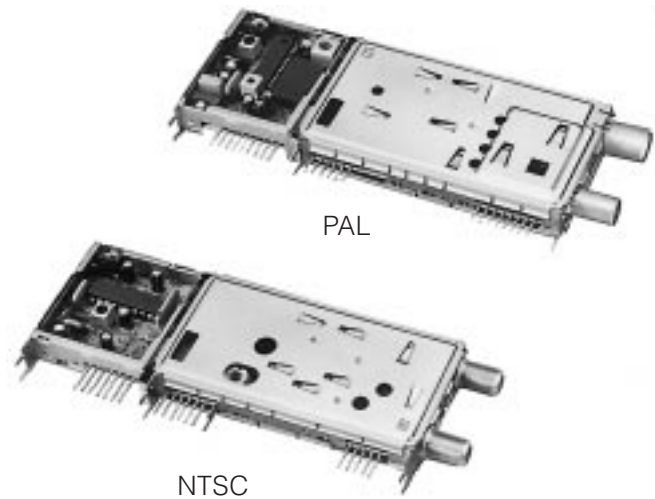
Integrates an RF Modulator, electronic tuner and VIF unit in a single unit.

Features

- Space-saving compact single unit : 30 % smaller than a separate compact system
NTSC : 69 ml / PAL : 75 ml
- Make the VIF unit detachable
- Designed in same height and same mounting dimensions, both for the NTSC and PAL systems

Recommended Applications

- VTR



■ Performance Specifications, Summary

● NTSC System

	U.S.A. Channel	Japan Channel
1. VIF SIF	45.75 MHz 41.25 MHz	58.75 MHz 54.25 MHz
2. Video Output Signal Level	1.0 ± 0.2 Vp-p	1.0 ± 0.2 Vp-p
3. Video S / N	46 dB typ.	46 dB typ.
4. Audio Output Signal Level	450 m Vrms typ.	450 m Vrms typ.
5. Audio S / N	40 dB min.	40 dB min.
6. Supply Voltage	+ 12 V DC or + 9 V DC	+ 12 V DC or + 9 V DC
7. Channel	ch. 2 to 13 ch. A-5 to ch. FFF ch. 14 to 69	ch. 1 to 12 ch. C13 to C35 ch. 13 to 62
8. Noise Figure	ch. 2 to 13 13 dB max. CATV ch. 14 dB max. ch. 14 to 69 14 dB max.	ch. 1 to 12 13 dB max. CATV ch. 14 dB max. ch. 13 to 62 14 dB max.
9. Modulator Channel	ch. 3 / ch. 4	ch. 1 / ch. 2
10. Input / Output Impedance	75 Ω Unbalanced	75 Ω Unbalanced
11. Isolation (50 MHz to 110 MHz)	60 dB min.	60 dB min.

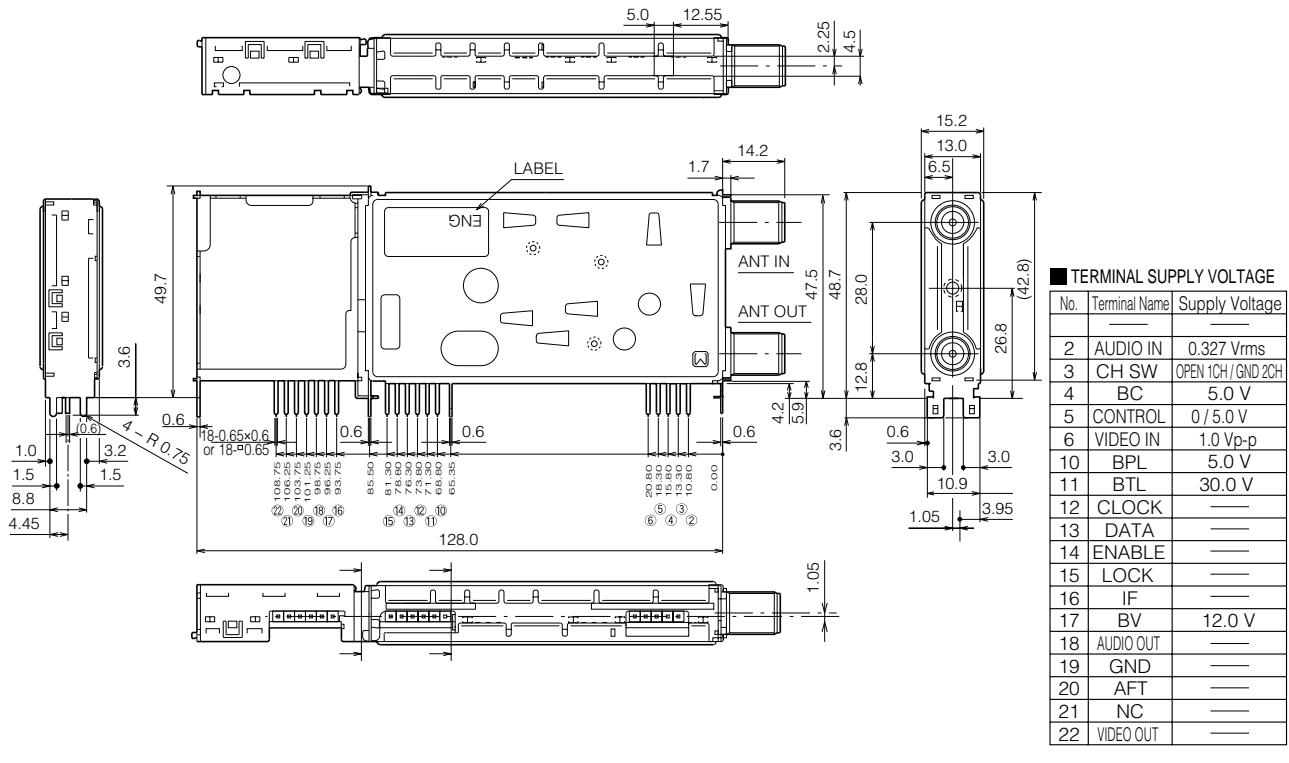
● PAL System

	Hyper Channel (BG / DK)	U.K. (I)
1. VIF SIF	38.9 MHz 33.4 MHz	39.5 MHz 33.5 MHz
2. Video Output Signal Level	1.0 ± 0.2 Vp-p	1.0 ± 0.2 Vp-p
3. Video S / N	46 dB typ.	46 dB typ.
4. Audio Output Signal Level	520 m Vrms	520 m Vrms
5. Audio S / N	40 dB min.	40 dB min.
6. Supply Voltage	RFC 5 V, TNR / IF 12 V	RFC 5 V, TNR / IF 12 V
7. Channel	ch. K1 to S7 ch. S8 to S41 ch. E21 to C57	ch. 21 to 69
8. Noise Figure	ch. K1 to S7 10 dB max. ch. S8 to S41 10 dB max. ch. E21 to C57 11 dB max.	ch. 21 to 69 11 dB max.
9. Modulator Channel	ch. 21 to 69	ch. 21 to 69
10. Input / Output Impedance	75 Ω Unbalanced	75 Ω Unbalanced
11. Booster Gain (44 MHz to 870 MHz)	3 dB	3 dB

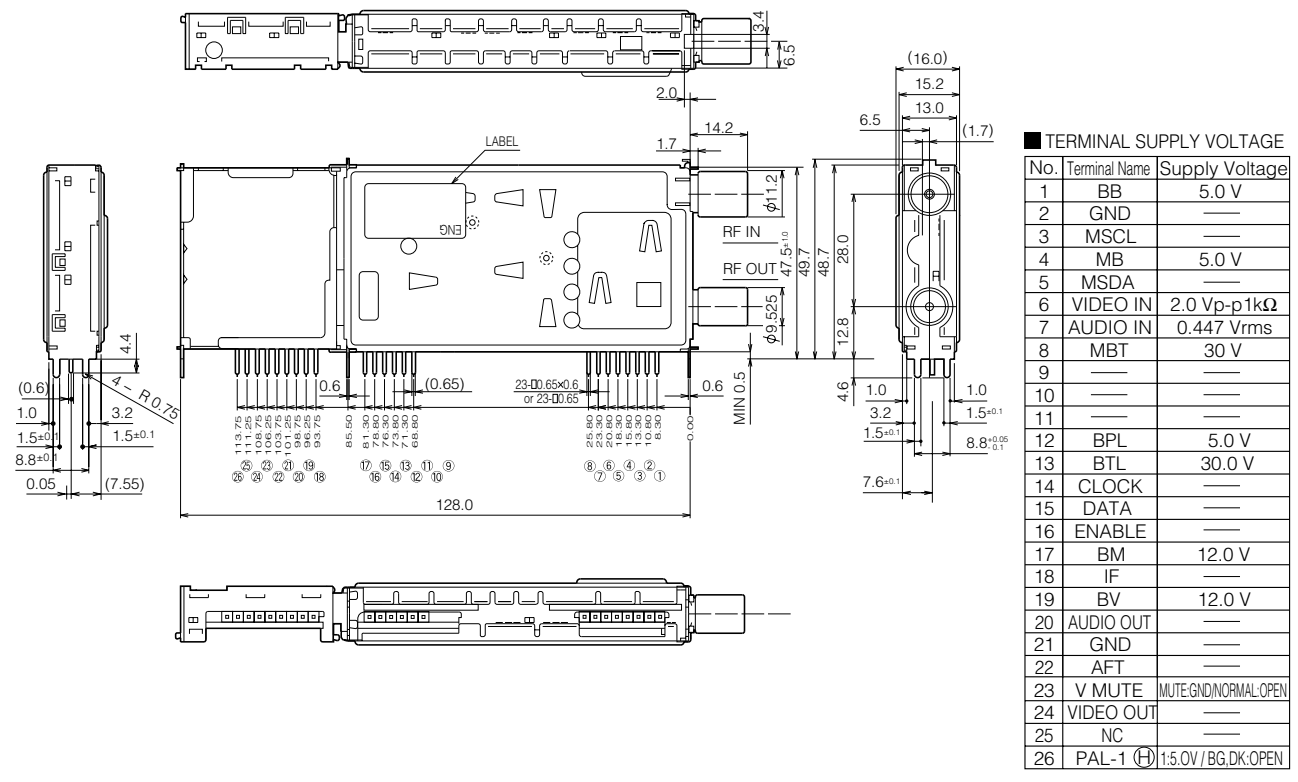
Design, Specifications are subject to change without notice. Ask factory for technical specifications before purchase and/or use. Whenever a doubt about safety arises from this product, please inform us immediately for technical consultation without fail.

■ Dimensions in mm (not to scale)

● **VPC (NTSC)**



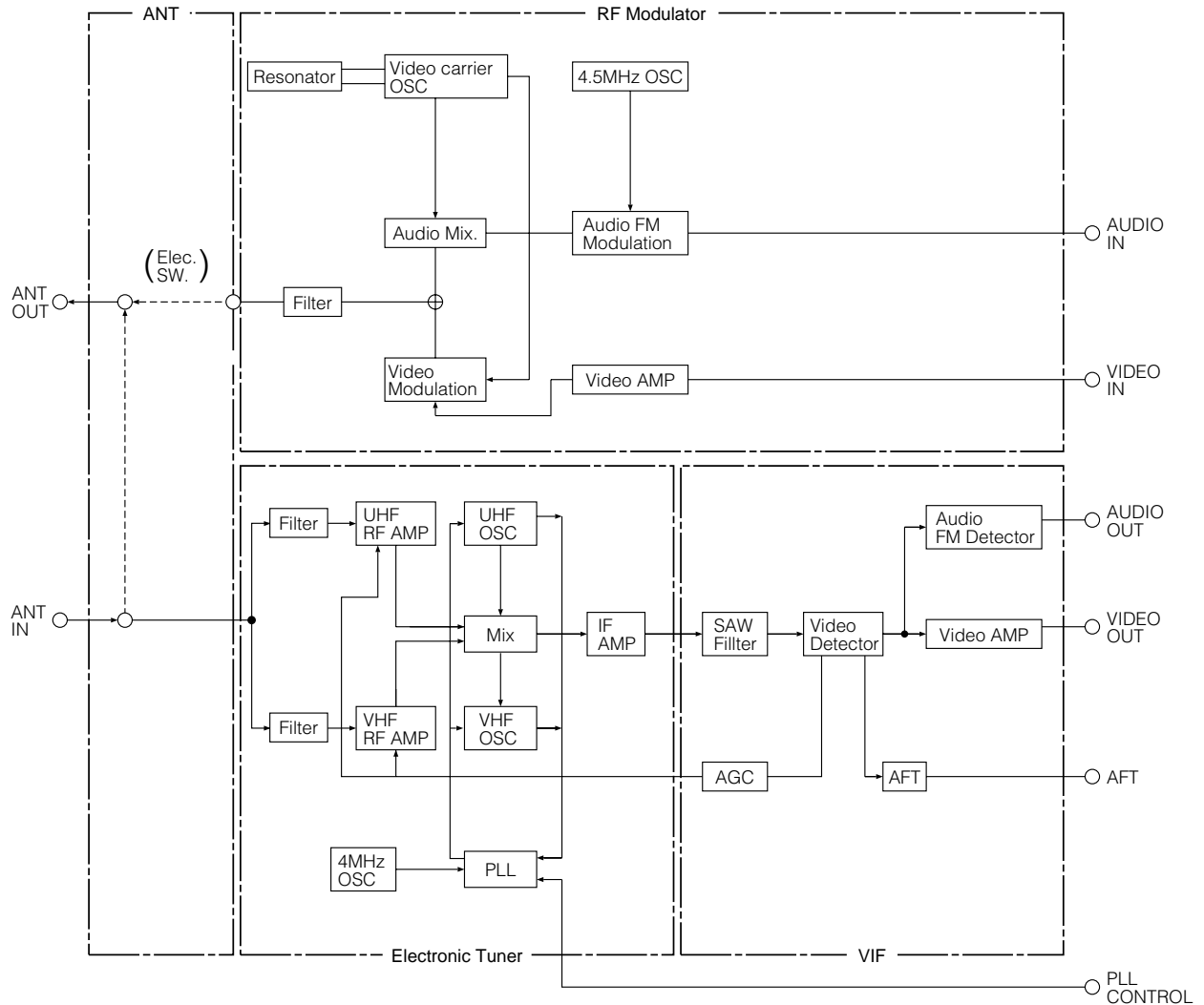
● **VPC (PAL)**



Design, Specifications are subject to change without notice. Ask factory for technical specifications before purchase and/or use. Whenever a doubt about safety arises from this product, please inform us immediately for technical consultation without fail.

■ Block Diagram (VPC)

● NTSC



■ Block Diagram (VPC)

● PAL

